

BRINGING WARMTH & TEXTURE TO PERSONAL & PROFESSIONAL SPACES.

Manufactured by wood veneer experts, for interior experts.

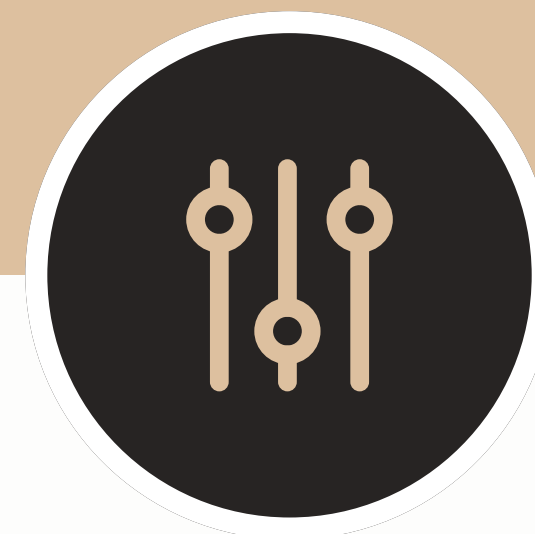
Contact Us



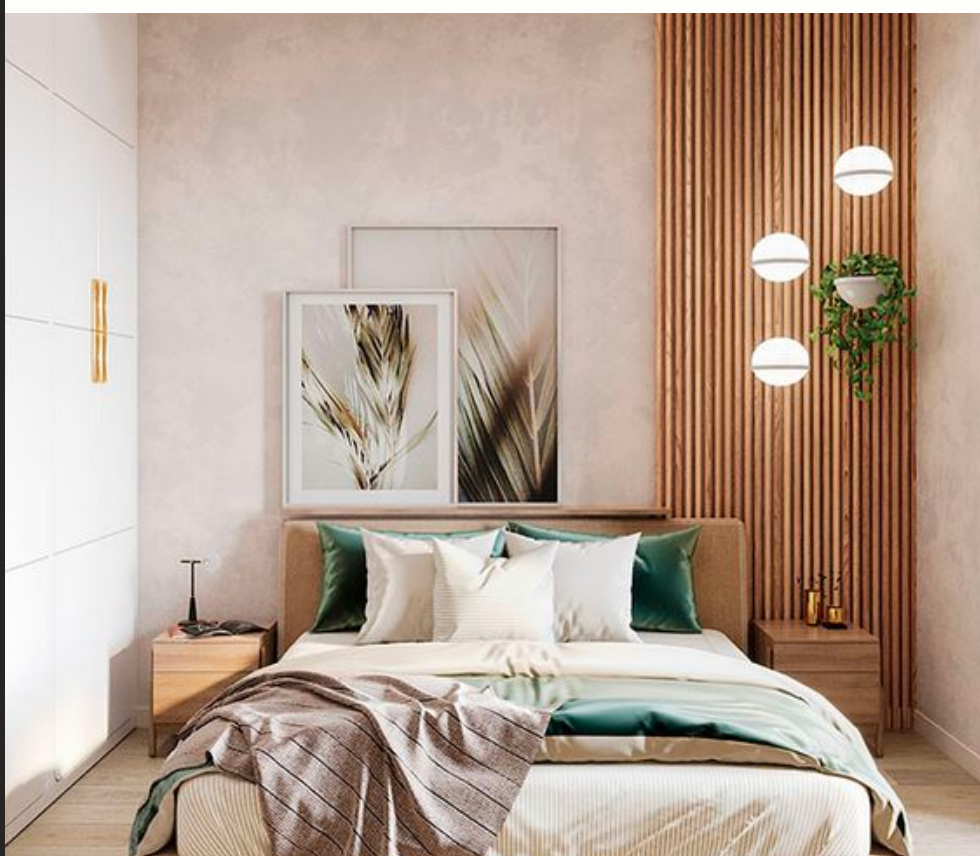
Quality & Precision



Diverse Profiles



Custom Orders



ABOUT THE PRODUCT



Available in two panel sizes:

- 2750 x 600 mm
- 2400 x 600 mm

Materials:

- Mould - Fully-wrapped natural oak decor paper finish (16x30mm MDF)
- Backing Board - Available in three finishes; white, black and natural oak (3mm MDF). Backed with water-resistant PVC vinyl finish, and premium double-sided tape.
- Optional Extra - Finishing trim with matching natural wood decor finish (19 x 30mm trim rail)

CLEANING & MAINTENANCE

- Wipe with a dry dust cloth. Avoid exposure to detergents and water.

1

MEASURE & PREPARE

Measure desired area and clean surface in preparation for installation.

If the surface is not suitable (ie, wallpaper, brick, uneven texture), it is recommended to secure each panel with additional wall plugs (6 x 45mm).

2

CUSTOMISE AS NEEDED

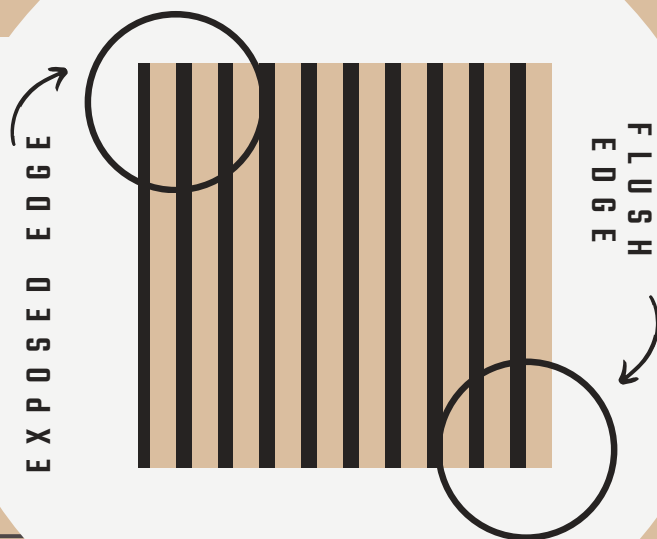
If required, measure and cross-cut panels according to desired width and height.

3

CONFIRM PLACEMENT

Confirm the position of each panel by marking the area before removing the cover strip on the double-sided tape.

Take special note of your flush edge and exposed edge, ensuring that panels can interlock together



4

MOUNT PANELS

Peel off the cover strip from the double-sided tape, ensuring your Decor Wall panel is rested directly on the floor or on your existing wall skirting. Position your panel, and press firmly over the tape location for good adhesion to the surface area. Repeat the process for all panels.

5

FINISHING TOUCHES

If required, finish with the optional natural oak trim rail (19 x 30mm)

INSTALLATION STEPS

